



**BRAC Institute of Governance and Development
BRAC University**

Secretary
Ministry of Railways
Rail Bhaban, 16 Abdul Gafri Road
Dhaka 1000

অতিরিক্ত সচিব (প্রশাসন) এর দপ্তর
রেলপথ মন্ত্রণালয়
সুপা-সচিব (প্রশাসন)/উপ-সচিব/উপ-প্রধান
ডায়েরী নং- ২০২ তাং- ১৩/৮/১৫
স্বাক্ষরঃ.....

August 13, 2015

সচিবের দপ্তর রেলপথ মন্ত্রণালয়
অতিরিক্ত সচিব
অতিরিক্ত সচিব (প্রশাসন) <input checked="" type="checkbox"/>
অতিরিক্ত সচিব (উঃ ও পরিঃ)
কার্ডিনাল অফিসার
এসসস সচিব
ডায়েরী নম্বর: ৪৩২৪
তারিখঃ ১৩/৮/১৫
স্বাক্ষরঃ

২০.৮.১৫
১০
Task

Subject: Certificate course Management of Land Acquisition, Resettlement and Rehabilitation (MLARR) at BRAC Institute of Governance & Development (BIGD), BRAC University

Dear Sir,

The BRAC Institute of Governance and Development (BIGD), BRAC University offers a 14-week long post-graduate certificate course on Management of Land Acquisition, Resettlement and Rehabilitation (MLARR). This course is designed for practitioners including government officials, urban planners, engineers, academics, project staff, and Masters level students. In conducting the course BIGD draws on expertise of land acquisition, resettlement and rehabilitation specialists who are working in public and private sector organisations, key development partner organisations and universities.

The overall objectives of the certificate course are to produce a group of highly skilled development practitioners in the specialised field of land acquisition for development projects and human displacement caused by such projects. MLARR is equivalent to 9 credits in a Master's degree course at BRAC University.

I am pleased to inform you that BIGD is offering the MLARR course in fall semester (Sept. - Dec. 2015). Course description and fees are detailed in the flyer enclosed herewith. Important dates and admission link are as follows:

Applications deadline : September 10, 2015
Viva voce : September 12, 2015
Online application : admissions.bracu.ac.bd

I shall be grateful if you kindly circulate admission notice and flyer in your office. Further information about the course may be obtained from Mohammad Sirajul Islam, Lecturer, BIGD through email: sirajul@bigd.bracu.ac.bd or Tel: 02-5881 0306, 5881 0320, Cell: +88 0171 144 7131.

Thanking you in anticipation.

Sincerely,

Dr. Sultan Hafeez Rahman
Executive Director

রেফ নং: -
সুপা-সচিব (প্রঃ) এর দপ্তর
ডায়েরী নং- ২০৬৭ তাং- ১৩/৮/১৫
উপ-সচিব (প্রঃ/উঃ/অঃ/কারসঃ/উঃ/.....)
স্বাক্ষরঃ.....



Admission Fall 2015

Post Graduate Certificate Course on

Management of Land Acquisition, Resettlement and Rehabilitation (MLARR)

The 14 weeks long MLARR course addresses key concepts, tools and techniques necessary to acquire land and manage resettlement of development-induced displaced people in a proper and equitable manner. It also provides an understanding of international best practices and a comparative reading of Bangladesh context on resettlement issues. The MLARR course is unique and only one of its kind in Bangladesh.

Course modules

1. Displacement, Equity and Development
2. State, Politics, Ethics and Rights
3. Special Topics in Displacement and Resettlement
4. Policy, Law and Practices
5. Project Cycle and Avoid-Minimise-Mitigate (AMM) Framework
6. Social Impact Assessment (SIA)
7. Environmental Impact Assessment (EIA)
8. Consultation, Communication and Conflict Management
9. Resettlement Action Plan (RAP) and Livelihood Restoration Plan (LRP)
10. Data Management and Geographic Information System (GIS)
11. Resettlement and Rehabilitation Programmes Implementation and Management
12. Monitoring and Evaluation

Applications deadline: September 10, 2015

Apply online: admissions.bracu.ac.bd

For Information:

Mr. Mohammad Siraiul Islam
 BIGD, BRAC University
 Center, GP. Ia-4, TB Gate
 Mohakhali, Dhaka 1212
 E-mail: siraiul@bigd.bracu.ac.bd
 Tel: 02 8810306, 8810326
 Cell: 0171 144 7131
 Website: bigd.bracu.ac.bd

Admission Requirements:

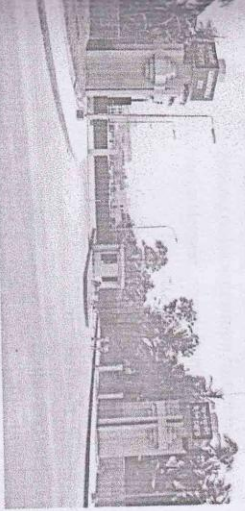
Minimum Bachelor's degree in any discipline

Applications deadline: September 10, 2015

Apply online: admissions.bracu.ac.bd

Mr. Mohammad Siraiul Islam
 BIGD, BRAC University
 Center, GP. Ia-4, TB Gate
 Mohakhali, Dhaka 1212
 E-mail: siraiul@bigd.bracu.ac.bd
 Tel: 02 8810306, 8810326
 Cell: 0171 144 7131
 Website: bigd.bracu.ac.bd

Minimum Bachelor's degree in any discipline



Faculty Members

National and international experts, senior government officials and academics working on land acquisition, resettlement and rehabilitation issues are invited to teach the course.

Head of the Institute

Dr. Sultan Hafeez Rahman, Executive Director

Academic Coordinator (ad interim)

Professor Rashed Uz Zaman, Ph.D. (Reading, UK)

Application Form

The application form and admission instructions are available at: admissions.bracu.ac.bd

Management of Land Acquisition, Resettlement and Rehabilitation Postgraduate Certificate



Course Completion

The course is completed in fourteen weeks, generally offered in Fall Semester i.e. September – December every year.

Class Timing

Three days a week, from 06.00 to 09.00 pm

Admission Requirements

The candidates must have a Bachelor's degree with a second division or GPA 2.5 in any discipline from a recognised public or private university and qualifying an admission test. Requirements may be relaxed in case of candidates who have minimum six years of work experience in addition to a Bachelor's degree.

Fee Structure

For Bangladeshi nationals

Admission fee BDT 9,500

Tuition fee BDT 40,500

For SAARC/developing countries' nationals

Admission fee USD 300

Tuition fee USD 1,350

For developed countries' nationals

Admission fee USD 300

Tuition fee USD 2,700

All fees are subject to change

Contact

Mr. Mohammad Sirajul Islam

Course Coordinator (Lecturer)

Cell: 01771 144 7131

Email: sirajul@bigd.bracu.ac.bd



BRAC Institute of Governance and Development

BRAC University

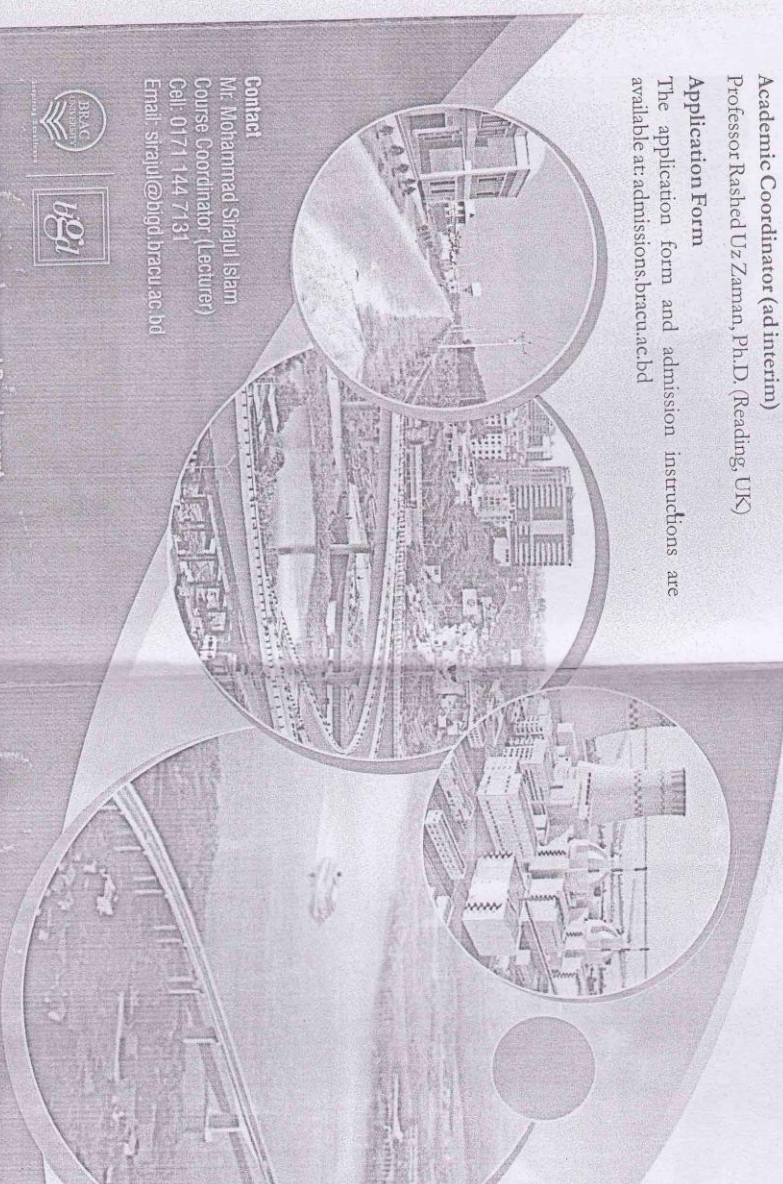
Sk Centre, GP Ja-4, TB Gate, Mohakhali

Dhaka 1212, Bangladesh

Tel: +88-02-5881 0306, 5881 0326, 5881 0320, 883 5303

Web: bigd.bracu.ac.bd, www.bracu.ac.bd

**BRAC Institute of Governance and Development
BRAC University**





BRAC University

BRAC University, established in 2001, is one of the leading institutions of higher education in Bangladesh. The University's goal is to provide an excellent broad-based education with a focus on professional development for students, in order to equip them with knowledge and skills necessary for leading the country quest for development.

Institute of Governance and Development (BIGD) established in June 2013 through the merger of the Centre of Governance Studies (IGS) and the BRAC Development Institute (BDI) at BRAC University. It is a centre of excellence in post graduate education and research, as well as a research laboratory for policy research, as well as a research laboratory for policy research.

Management of Land Acquisition, Resettlement and Rehabilitation (MLARR)

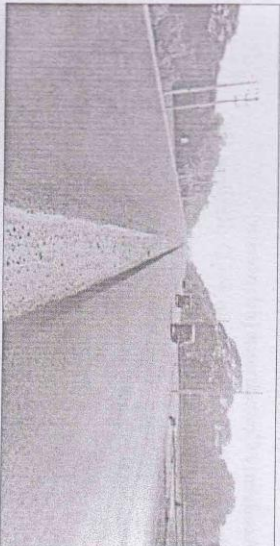
Graduate Certificate Course

Land is a valuable asset and high population density makes land acquisition a challenging issue in many parts of the world. However, acquiring land is inevitable to build infrastructure, industrialisation, urbanisation and transportation. In most cases, such acquisition in a haphazard manner results in legal and social problems and adversely influences the implementation of development projects. As land acquisition for development projects directly or indirectly affect people residing in the site of proper resettlement of the affected people in terms of livelihood restoration, equitable compensation and addressing issues of socio-cultural losses have assumed importance.

This postgraduate certificate course on Management of Land Acquisition, Resettlement and Rehabilitation (MLARR) covers key concepts, tools and techniques necessary to acquire land and manage resettlement of development-

induced displaced people. It also provides an understanding of international best practices and a comparative reading of Bangladesh context from the legal, policy and implementation perspectives. The MLARR course, which is offered since 2009, is unique and only one of its kind in Bangladesh.

The learning methods include classroom teaching, case analysis, role play, and field work.



Course Objectives

The course intends to produce a group of highly skilled development practitioners who will be able to manage development-induced land acquisition, resettlement and rehabilitation in a proper and equitable manner. Particularly, the course aims to enhance participants' ability to:

- explain concepts and issues related to state's eminent domain to acquire land, rights of displaced people, and sustainable development;
- understand land acquisition and resettlement laws and policies of the Government of Bangladesh and development partners;



- develop resettlement project by taking social environmental impact assessments into consideration
- manage conflicts in the project sites through stakeholder consultation and communication processes;
- prepare and implement resettlement action plan, livelihood restoration plan; and
- design a monitoring and evaluation system to ensure proper and timely implementation of resettlement plan.

Course Curriculum

The course is divided into twelve modules:

- Module 1 : Displacement, Equity and Development
- Module 2 : State, Politics, Ethics and Rights
- Module 3 : Special Topics in Displacement and Resettlement
- Module 4 : Policy, Law and Practices
- Module 5 : Project Cycle and Avoid-Minimise-Mitigate (AMM) Framework
- Module 6 : Social Impact Assessment (SIA)
- Module 7 : Environmental Impact Assessment (EIA)
- Module 8 : Consultation, Communication and Conflict Management
- Module 9 : Resettlement Action Plan (RAP) and Livelihood Restoration Plan (LRP)
- Module 10 : Data Management and Geographic Information System (GIS)
- Module 11 : Resettlement and Rehabilitation Program Implementation and Management
- Module 12 : Monitoring and Evaluation

